



Catalog 397: Going Places!

JOSLIN HALL RARE BOOKS, EPHEMERA & PHOTOGRAPHS

Catalog 397:
Going Places -
Women in Vehicular
Vernacular Photography.

This is the second of a series of short, thematic photo catalogs we will be issuing in 2019.

POSTAGE: \$2.99 per order (U.S.), no matter how many items are included. Orders of \$20 or more are shipped free of charge.

JOSLIN HALL RARE BOOKS, EPHEMERA, & PHOTOGRAPHS

Post Office Box 49
Hatfield, Mass 01038

telephone: (413) 247-5080
e-mail: office@joslinhall.com
website: www.joslinhall.com

Member- Antiquarian Booksellers Association of America;
International League of Antiquarian Booksellers;
Southern New England Antiquarian Booksellers;
Ephemera Society of America

Email reservations are highly recommended.
Standard courtesies are extended to institutions and dealers. Postage charges are additional.

All items may be returned within ten days of receipt.
Checks, Visa, Mastercard & Paypal accepted.

Join us on Facebook & Twitter !



2.5"x3.5" - \$10

1



2.5"x4.5" - \$10

2



3.5"x2.5" - \$10



3.5"x5" - \$10



3.5"x2.5" - \$10



6

5"x3.5" - \$10



2.75"x4" - \$10



Get your bathing suit on Dorth!

2.75"x3.75" - \$10



3.5"x5" - \$10



2.75"x2" - \$10



2.5"x3.5" - \$10

11



3.5"x3.5" - \$10

12



2.5"x4" - \$10

13



2.25"x3.25" - \$10

14



4.25"x2.5" - \$10



4.5"x3.25" - \$10



2"x3.25" - \$10

17



2.75"x4.5" - \$10

18



19

3.25"x2.25" - \$10



4.5"x2.75" - \$10



3.5"x2.25" - \$10



3.5"x2.25" - \$10



2.75"x4.5" - \$10

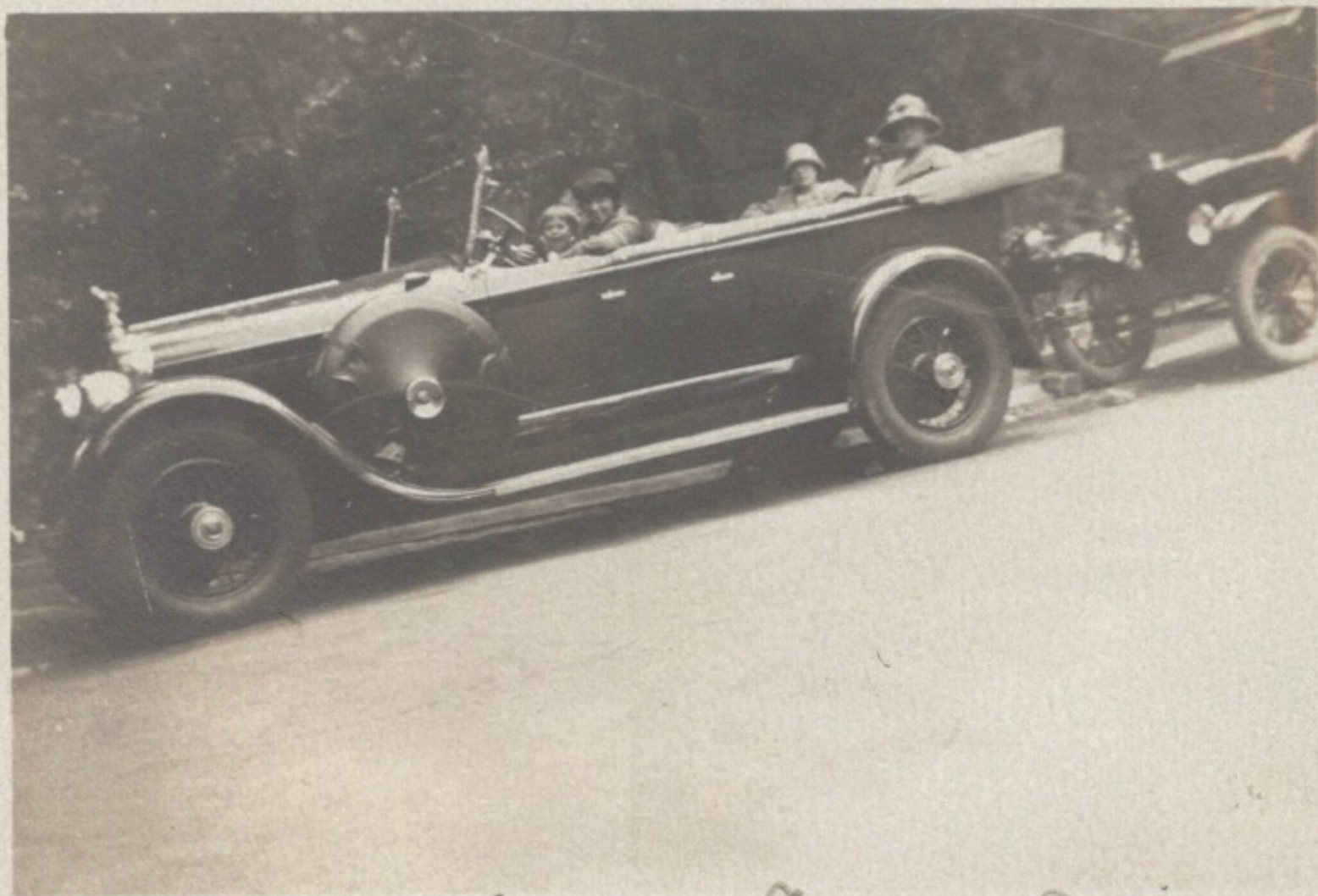


2"x2.75" - \$10



ABORIGINAL
MAN

SHINY SHOWCASE
BUT LOOK WHAT'S INSIDE



Gertie, Jackie, Joyce, Eleanor + Effie



27

3.25"x5.5" - \$10



2.5"x3.75" - \$10





3.5"x3.5" - \$10



2.5"x3.5" - \$10

• OCT 62



3.5"x3.5" - \$10



2.5"x4.25" - \$10

33



3.5"x3.5" - \$10

34



2.75"x4.5" - \$10



4"x2.5" - \$10



4"x3" - \$10



That's All, Folks!