

JOSLIN HALL RARE BOOKS, EPHEMERA & PHOTOGRAPHS

Catalog 407:

Death,  
Funerals,  
& Mourning



*to the Memory the Virtues of the late*

**JOSLIN HALL RARE BOOKS,  
EPHEMERA, & PHOTOGRAPHS**

Post Office Box 49  
Hatfield, Mass 01038

telephone: (413) 247-5080  
e-mail: [office@joslinhall.com](mailto:office@joslinhall.com)  
website: [www.joslinhall.com](http://www.joslinhall.com)

Member- Antiquarian Booksellers Association of America;  
International League of Antiquarian Booksellers;  
Southern New England Antiquarian Booksellers;  
Ephemera Society of America

Email reservations are highly recommended.  
Standard courtesies are extended to institutions and dealers. Postage charges are additional.  
All items may be returned within ten days of receipt.  
Checks, Visa, Mastercard & Paypal accepted.

Join us on Facebook & Twitter !

*Immortal spirits rise to shine  
As subject's of God's grace.*

## REDUCED PRICE LIST.

# KEYSTONE COFFIN AND CASKET WORKS.

*Allegheny City, Pa., Feb. 21, 1876.*

GENTLEMEN:

We take pleasure in presenting to you the following **Greatly Reduced List of Prices** of Caskets and Coffins, manufactured by us, to take effect on all goods shipped on and after this date.

*For Style and Description see our Illustrated Catalogue.*

1. [Cheap Death] 1876 Reduced Price Coffins Single-Sheet Handbill from Allegheny City, Pennsylvania.

An attractive single sheet handbill from Wettach, Couch & Co. of Allegheny City, Pennsylvania's Keystone Coffin and Casket Works, offering a "Reduced Price List". Because nothing says you care for your dear deceased like a cut-price coffin. Single sheet. 8"x10". Folded, minor soil. [45262] \$175

		2.0	2.2	2.4	2.6	2.9	3.0	3.3	3.6	3.9	4.0	4.3	4.6	4.9	5.0	5.3 to 6.3	
No. 1,	{ Changed from Square to Round Corner, } ...	\$1.20	\$1.45	\$1.65	\$2.05	\$2.30	\$2.60	\$2.90	\$3.20	\$3.40	\$3.60	\$3.90	\$4.25	\$4.65	\$5.15	\$5.25	
No. 2,	Double Top, R. Im. H. G.....				2.25	2.50	2.85	3.25	3.50	3.75	4.00	4.50	5.00	5.50	6.00	6.00	
No. 6 and 7,	Raised Top, R. Im.....				4.25	4.50	5.00	5.75	6.50	6.75	7.00	7.25	7.50	7.50	7.50	7.50	
No. 8 and 9,	" " Wal.....				5.00	5.50	6.25	7.00	7.75	8.50	9.00	9.50	10.00	10.75	11.00	11.00	
No. 10,	Hinged Lid Casket, R. Im.....				5.25	5.60	6.00	6.60	7.35	8.25	9.20	10.10	10.60	11.05	11.50	12.00	
No. 11,	" " Wal.....				6.45	7.00	7.80	8.50	9.40	11.00	12.40	13.70	14.40	14.90	15.30	16.00	
No. 12,	Patent Top Casket, R. Im.....				4.75	5.25	5.75	6.25	6.80	7.40	7.85	8.35	8.80	9.30	9.60	9.60	
No. 13,	" " Wal.....				6.00	6.75	7.50	8.35	9.20	10.00	10.70	11.40	12.15	12.85	13.50	13.50	
No. 16,	{ Casket, Flat Top, Bent Ends and Rd. Corners, R. Im., Half Glass, } ...				*	*	*	*	*	*	*	*	*	*	*	8.50	
No. 17,	{ Casket, Flat Top, Bent Ends and Rd. Corners, Walnut, Half Glass, } ...				*	*	*	*	*	*	*	*	*	*	*	12.50	
No. 18,	{ New Raised Top Casket, R. Im. Round Corners and Half Glass, } ...				*	*	*	*	*	*	*	*	*	*	*	9.60	
No. 19,	{ New Raised Top Casket, Wal. Round Corners and Half Glass, } ...				*	*	*	*	*	*	*	*	*	*	*	13.50	
<b>CLOTH COVERED CASKETS.</b>																	
No. 20,	{ Raised Top, Octagon Corner and Half Glass, or Hinged Lid without Glass, covered with good black broadcloth, } ...				*	*	*	*	*	*	*	*	*	*	*	22.00	
No. 21,	{ Raised Top, Octagon Corner, Lid Hinged to raise from the body of Casket and Rayed inside. Covered with fine white cloth, } ...	10.00	11.50	13.00	14.50	16.00	17.50	19.00	*	*	*	*	*	*	*	*	

Our Nos. 10 and 11 Caskets are finished same on both sides of Lid, and can be used with or without Raying.

**TERMS.**—Same as stated in our Illustrated Catalogue, viz., 90 days net, or 10 per cent. discount, if paid within *Thirty* days from date of invoice.

Soliciting a share of your patronage, we remain

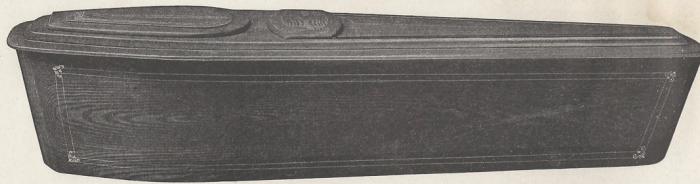
Yours, Respectfully,

**WETTACH, COUCH & CO.**

# CHEAP HOSPITAL COFFINS

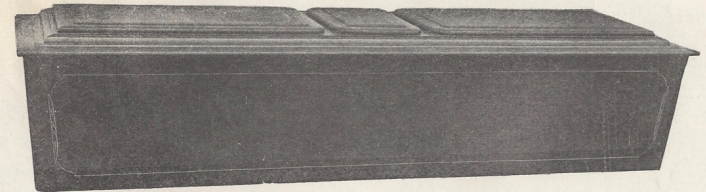
## 2. [Cheap Death] 1910s Cheap Hospital Coffins Easton Pennsylvania Trade Catalog.

A short but interesting catalog by W.K. Spangenberg of Easton, Pennsylvania- "The designs shown herein are used extensively by undertakers for hospital, pauper or cheap work of any kind. They are made on yellow pine, mahogany imitation, and finished with four coats of good varnish". Six styles are illustrated, and the last page features the company's Slate grave vault. Paper covers. 8"x3.75". 8 pages, black & white illustrations. Some soil, pages with a light water stain ghost along the top edge. [49353] \$250



No. 60. NEW ROUND CORNER DOUBLE TOP COFFIN.

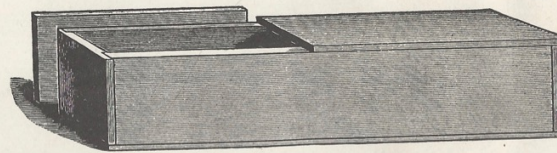
No. 60. Imitation Mahogany, glass, beaded top, striped - 5 ft. to 6 ft. 3 in., \$4.25  
ADULT SIZES ONLY.  
Outside Pine Boxes, \$3.25. Papering and Crating, each, 35c.



No. 9. SQUARE CASKET.

No. 9. Imitation Mahogany, sliding glass, - 5 ft. 3 in. to 6 ft. 3 in., \$5.75  
ADULT SIZES ONLY.  
Pine Boxes, \$3.25. Papering and Crating, each, 35c.  
FREIGHT PAID.

## Slate Grave Vaults



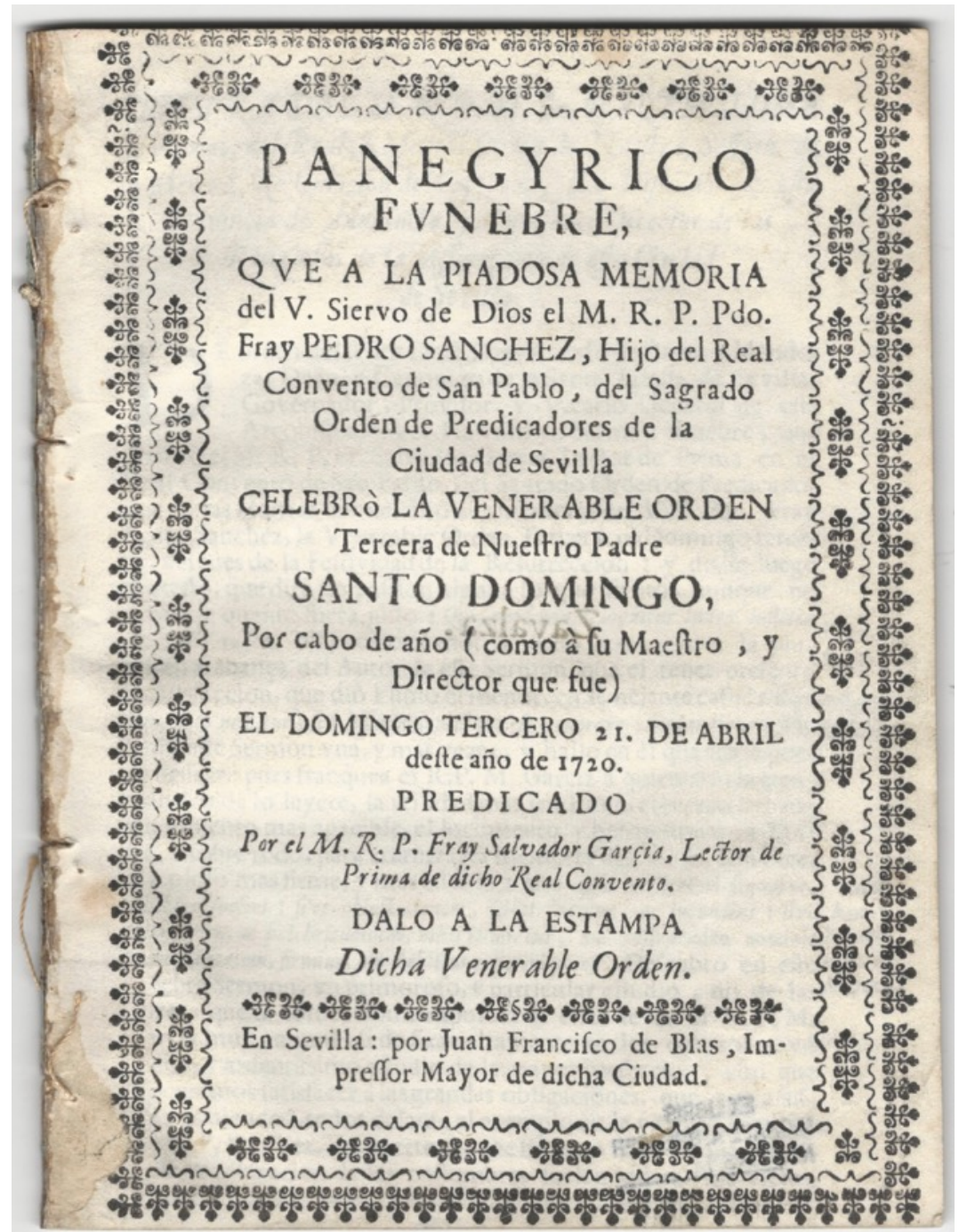
PLAIN SLATE VAULT

EASY TO SET UP CHEAPER THAN BRICK  
COST NO MORE THAN A CHESTNUT BOX

SEND FOR PRICES TO  
**THE EASTON SLATE VAULT CO.**  
EASTON, PA.

3. [Dead Friars] **Panegyrico Funebre que a la Piadosa Memoria del V. Siervo de Dios el M.R.P. Pdo. Fray Pedro Sanchez, Hijo del Real Convento de San Pablo, del Sagrado Orden de Predicadores de la Cuidad de Sevilla, Celebrò la Venerable Orden Tercera de Nuestro Padre Santo Domingo...**

Printed in Seville for Juan Francisco de Blas in 1720. The funeral orations and related ceremonies for Father Pedro Sanchez of Seville and Santo Domingo. OCLC locates one copy, at the University of Seville, and one is also listed in the Hispanic Society of America library catalog. Disbound. 5.5"x7.5", [10] + 24 pages. Several woodcut initial letters. Clean. Trimmed a bit closely. [42931] \$50



#### 4. [Death-Mobiles] 1910s East Hartford Connecticut Funeral Director Business Card with Auto-Ambulance.

A rather wonderful card for Whitney-Cattell Co., “Private automobile ambulance at your service at all times”, with a picture of the auto-ambulance on the card. Card. 4.5”x2.5”. Minor soil, light wear. [46248] \$65



#### 5. [Death-Mobiles] 1960s Barcelona Municipal Funeral Parlors Catalog of Coffins, Urns & Hearses.

“Ayuntamiento de Barcelona - Servicio Municipal de Pompas Funebres” (City Council of Barcelona- Services of Municipal Funeral Parlors). A rather incredible catalog of fancy and plain caskets (32), urns (4), burial stands (3), and hearses (17 plus 4 interiors, 21 plates). The caskets range from the plainest wood to the most exuberant examples of Spanish Baroque craftsmanship in exotic woods, ostentatious brass and gilt fittings, some with painfully dramatic sculpted crucifixions going on as their central decoration. But even eclipsing these creations are the hearses, which came in a wide range of styles and ages, from modern station wagons to painfully utilitarian delivery-type service vans, from 1950s behemoths to elegant sedans left over from the 1930s, and an all-black 1920s pickup truck with a towering black and gold painted rotunda set on the truck bed. Hardcover. 12.5”x6.5”. 4 pages of text plus 60 color plates. Minor soil, light wear. [45362] \$575



AYUNTAMIENTO DE BARCELONA

SERVICIO MUNICIPAL DE POMPAS FÚNEBRES



SERVICIO MUNICIPAL DE POMPAS FÚNEBRES

Ayuntamiento de Barcelona



Servicio n.º 12 especial B

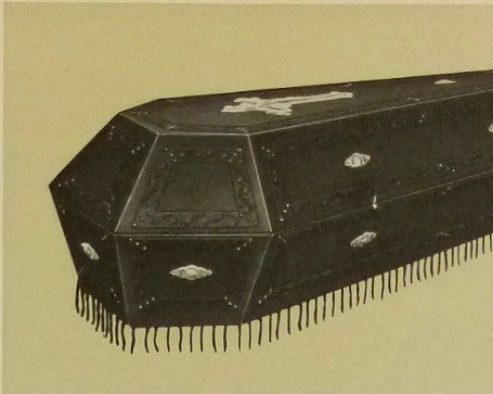
SERVICIO MUNICIPAL DE POMPAS FÚNEBRES

Ayuntamiento de Barcelona



SERVICIO MUNICIPAL DE POMPAS FÚNEBRES

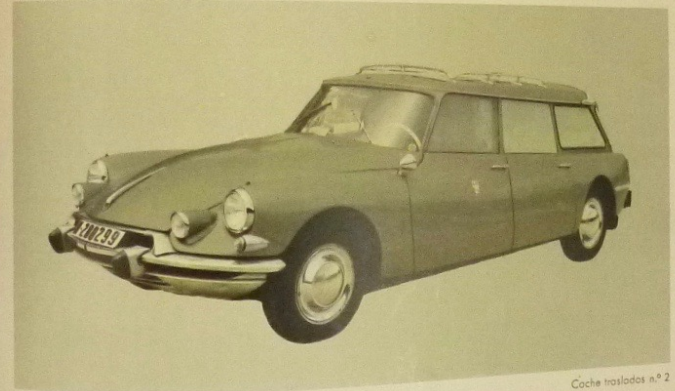
Ayuntamiento de Barcelona



Servicio n.º 1

SERVICIO MUNICIPAL DE POMPAS FÚNEBRES

Ayuntamiento de Barcelona

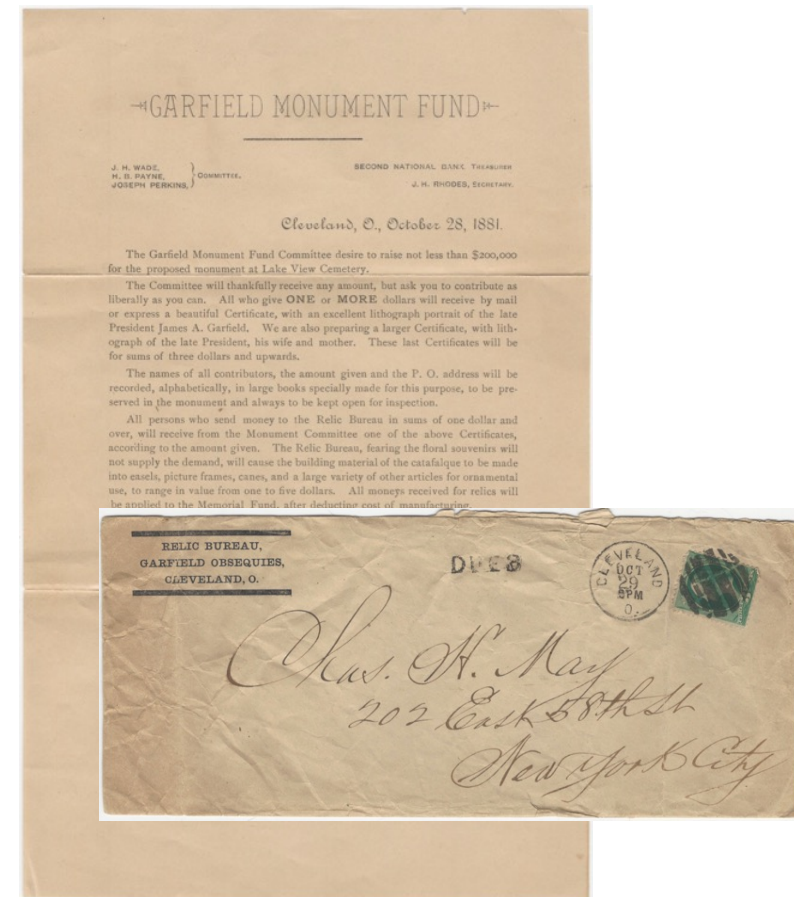
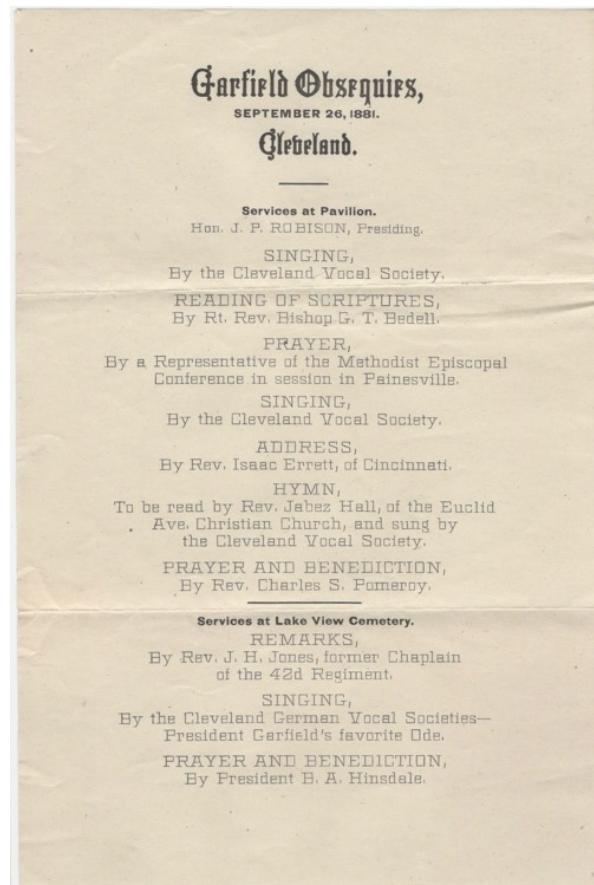


Coche trasladados n.º 2

## 6. [Dead Presidents] Several Items Related to the 1881 Funeral of President James A. Garfield.

President Garfield was shot at a train station on July 2, 1881, after only a few months in office, and died on September 19th. His body lay in state at the Capitol and was then taken by train to Cleveland where more than 150,000 people paid their respects before his burial on September 26th. His body was temporarily interred in Cleveland's Lake View Cemetery while funds were raised for a permanent memorial and resting place at the cemetery, in which he was re-interred with great ceremony on May 19, 1890.

This lot consists of: - A card labeled "Relic from the Catafalque of President Garfield, Cleveland Ohio, September 26th, 1881", which has a small but handsome rendering of the structure; - A sheet of the "Garfield Obsequies, September 26, 1881, Cleveland"; - A sheet circulated by the Garfield Monument Fund, dated October 28, 1881, seeking donations for the erection of the permanent monument/mausoleum; - An envelope postmarked Cleveland, October 29, hand addressed to an address in New York City, with the black-bordered return address of the "Relic Bureau, Garfield Obsequies, Cleveland, O.". 4 pieces. Some light soil and wear. Monument Fund sheet printed on thin paper with some separation along the folds. [43245] \$275

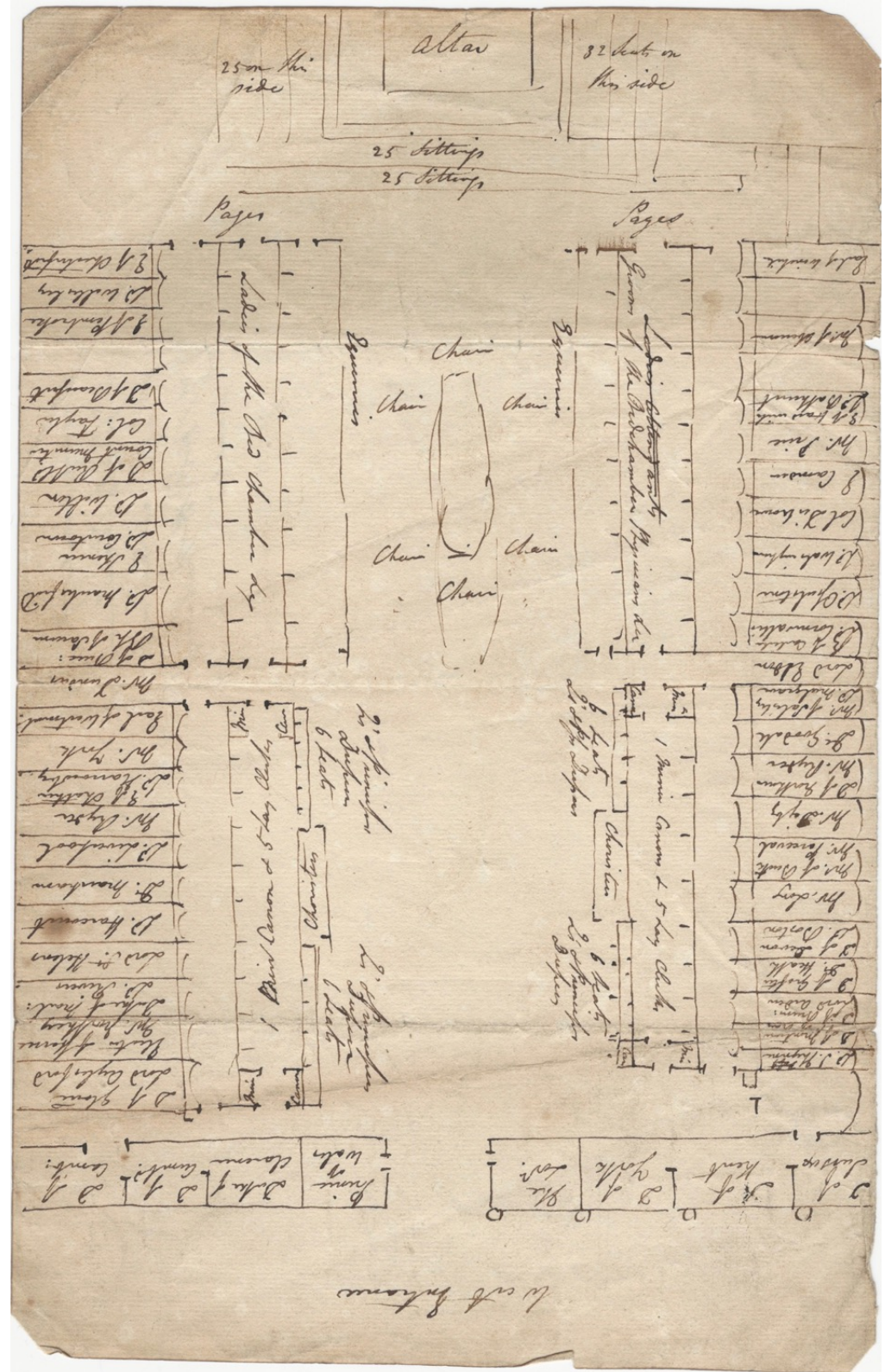




7. [Dead Royalty] 1810 Sketch of the 'Arrangement of St. George's Chapel, Windsor, at the Funeral of HRH Princess Amelia'.

A "beautiful, slender girl with ruby lips and auburn hair... amiable, spirited, unselfish and intelligent", and the "most turbulent and tempestuous of all the Princesses", Princess Amelia [b.1783] was the fifteenth child and sixth (& youngest) daughter of King George III. Even her sister-in-law, the Princess Caroline, who disliked her in-laws with a fierce intensity, estimated Amelia as the "most amiable of the bunch". Princess Amelia was said to be her father's favorite, and he called her 'Emily', though the duties of kingship, and his increasingly frequent bouts of insanity, resulted in Amelia and her closest sisters, Mary and Sophia, being brought up by governesses. Starting around 1798 Amelia suffered a series of ailments, including early symptoms of tuberculosis, for which she was often sent to the seaside to recuperate, but she never really regained full health. An 1808 case of measles deteriorated into erysipelas, and she died on the 2nd of November, 1810. Her death is credited by some historians as having helped push George III into the final mental decline which resulted in the institution of the Regency Act of 1811, and he was said by his physician to cry "in a wild, monotonous, delirious way, 'Oh Emily, why won't you save your father? I hate all the physicians...". She was buried on November 13th at St George's Chapel, Windsor Castle.

This sketch of the arrangement of the chapel for the funeral includes the coffin and chairs around it, and notes about which royal personages, lords, and officials were sitting in each section. Presumably sketched at the time of the funeral, with one cross-out and correction. Single sheet. 8"x12.5". Folds, edge wear, corners chipped. Minor soil. [45697] \$1,200



This Epistle is designed to commemorate  
to the Memory the Virtues of the late  
Madam Podmore on her benevolence charity  
She died on the 28<sup>th</sup> day of March 1850.  
at Pailton House.  
1<sup>st</sup> Behold the ravages of time  
Sweep's off the human race,  
Immortal spirits rise to shine  
As subject's of God's grace.  
2<sup>nd</sup> Beyond beyond our mortal sight  
Is more than we conceive,  
To fill the soul with pure delight  
What gracious souls receive.

## 8. [Dead Teachers] Curious 1850 Manuscript Elegy to Madame Podmore, Benevolent Teacher of Warwickshire.

An interesting manuscript poem, probably written by a pupil, to a much-loved teacher/benefactor. Many of the initial letters which begin each line are decorative, as is some of the spelling. "This Epistle is designed to commemorate to the Memory the virtues of the late Madam Podmore on her benevolent charity. She died on the 28th day of March 1850 at Pailton House. Inscribed on the back in the same hand- "Most humbly dedicated unto & / For you". Pailton is a village in Warwickshire, a 1910 photo of Pailton House shows a sprawling 2-story house with at least 6 chimneys and surrounding gardens. The Reverend Robert Beresford Podmore, of Pailton House, a graduate of Trinity College, died at age 81 in 1842. Possibly Madam Podmore was his widow.

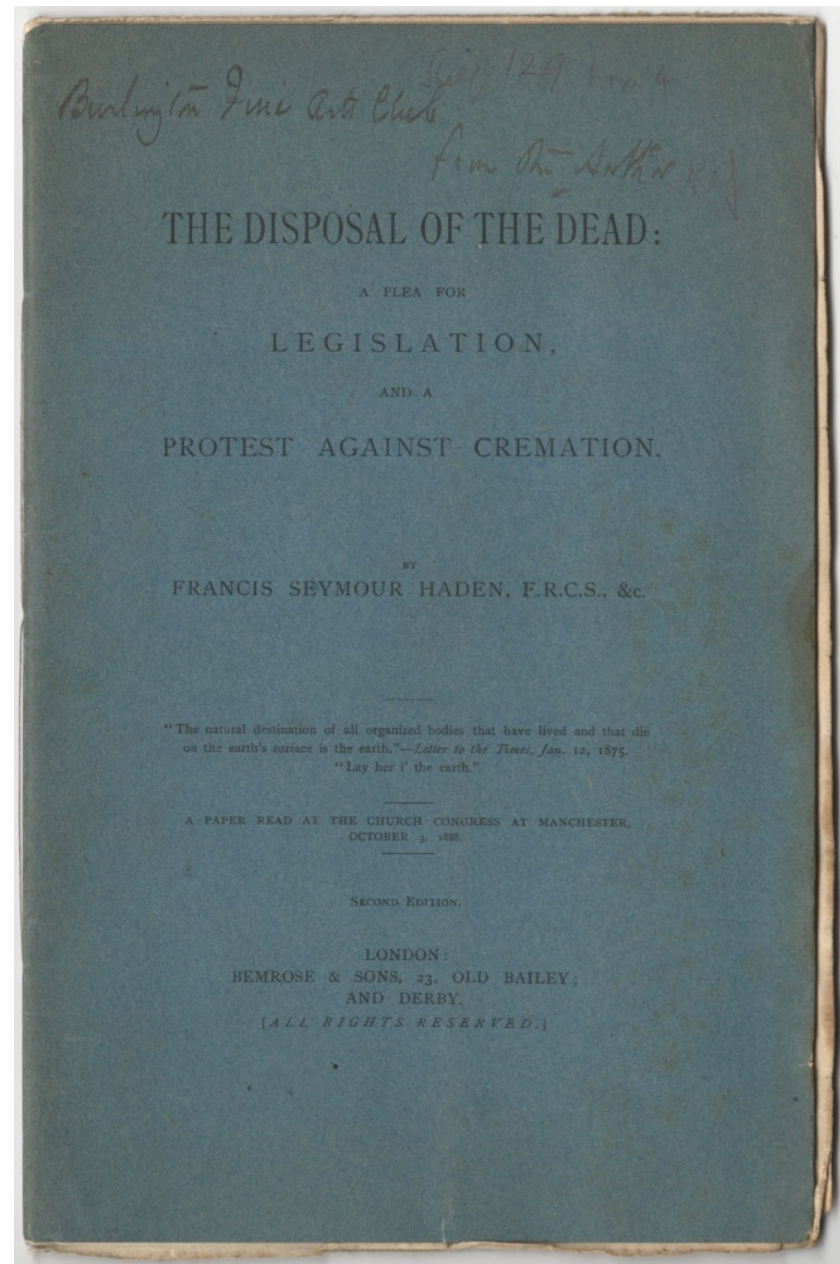
Folio sheet, 8.5"x13". First leaf with a torn-off portion at the bottom, not affecting the text. Some folds and general edgewear, light soil, etc. [43248] \$175

Upon young minds much kindness wrought  
Such kindness did produce,  
Unto poor children such things taught  
Form'd for immortal use.  
By her desire so nobly gave  
Her christian mind was sound,  
For no distinction there was made  
No bigotry was found.  
O charity thy flow'rs  
Thy graces sweetly play  
Thy bloom with heavenly pow'r  
In everlasting day.

Characteristick  
Behold with steady steps she mov'd  
Open'd the cottage door,  
And there was prov'd how much she lov'd  
Relieving, needy, poor.  
This memory <sup>perpetual</sup> perpetual liv's  
It liv's for evermore,  
In thankfull hearts for what she giv's  
At many a cottage door.  
This memory sweet to record  
For all her favours giv'n  
Acceptable before the Lord,  
A record made in heav'n  
Within that school there knowledg grow's  
Children the pious gather,  
By order hind she gave them cloath's  
And fear'd them altogether.

9. [Disposable Death] **The Disposal of the Dead: A Plea for Legislation and a Protest Against Cremation.**

By Francis Seymour Hayden. Published in London by Bemrose & Sons, in 1888. 2nd edition. An interesting and outspoken attack by an advocate of a certain type of radical burial reform against another type. Hayden was a persuasive advocate for legislation to forbid the use of embalming and coffins for burial of the dead, as both retarded the decomposition of the body, which if left only in a burial shroud would return to its natural elements in a matter of months. Having defended this reform he proceeds to attack cremation as not only impractical but harmful, to both the atmosphere and the criminal justice system. For reasons that he explains and yet remain somewhat elusive, the author is convinced that the main use of cremation is to cover the trails of murderers who use poison. I honestly have no idea what that was all about. Softcover. 6.5"x10", 16 pages. Inscribed by "the author" on the cover. Light wear, minor soil. [45272] \$125



# 10. [Fancy Death] A Very Unusual 1920 French Porcelain Funeral Wreath Trade Catalog.

A very unusual 1920s French trade catalog issued by Hte. Boulenger & Cie in the 1920s illustrating porcelain funeral wreaths and decorations in bright colors. Also includes many crosses and some bouquets, all floral covered. Quite uncommon. Softcover. 7.25"x10.75. 15 pages, color illustrations. Dusty and a bit water wrinkled, minor soil. [43322] \$275





*Pompe funèbre.*

11. [Far Eastern Death] 1827 Chinese Funeral French Colored Lithograph by J.P. Chenot.

A lovely hand-colored lithograph of a Chinese funeral scene, signed in the plate by J.P. Chenot, and dated 1827. Published by Mlle. Formentin. Single sheet. 14"x10.5". Some soil and wear, lower right corner chipped and torn. [48968] \$40

12. [Far Eastern Death] 1923 Snapshot of Japanese Funeral Printed Onboard an Ocean Liner.

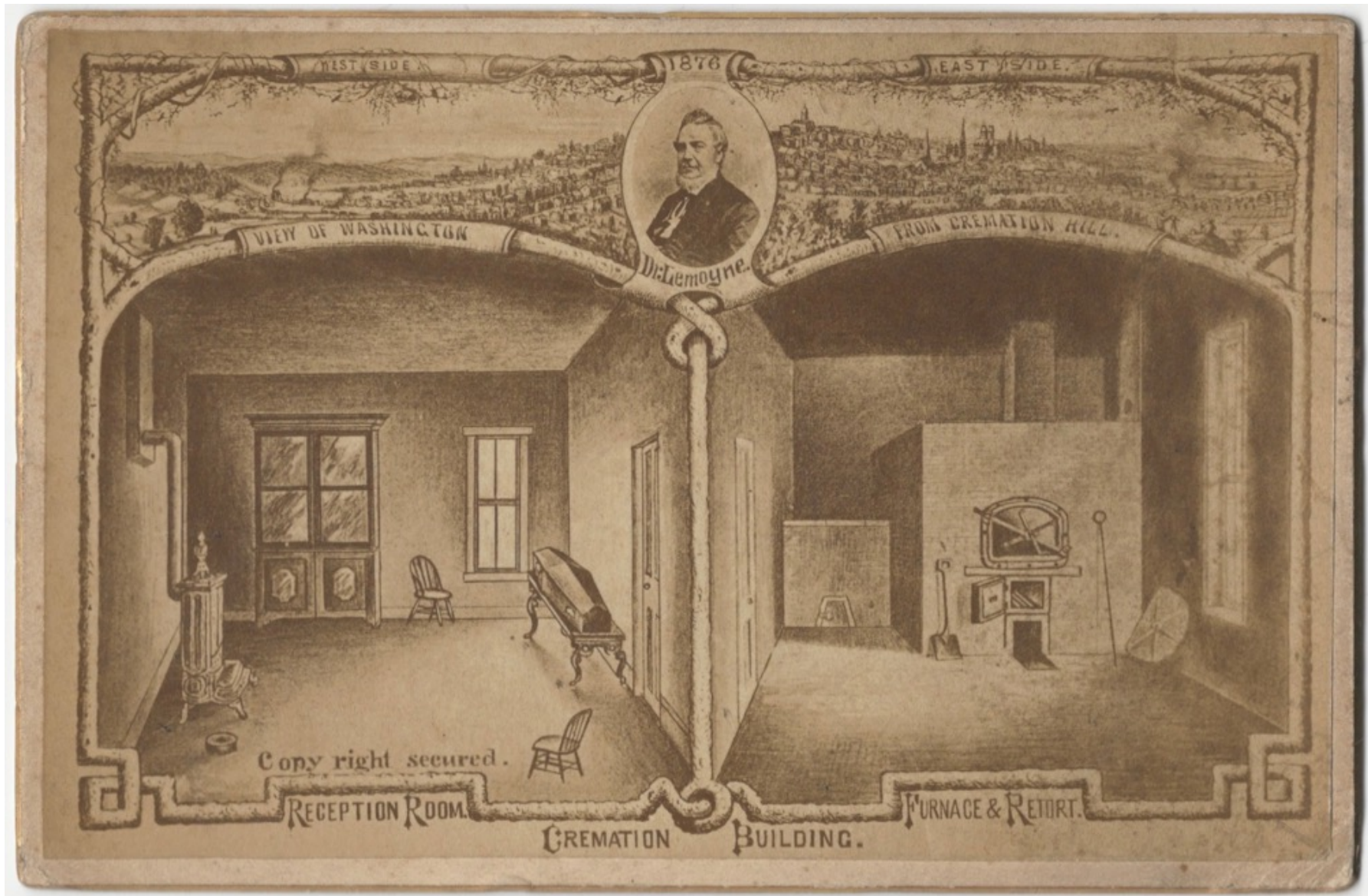
A nice black & white snapshot of "A large Japanese funeral" procession, dated "3-2-1923 Yokohama" in ink in the margin. On the back is printed "Printed on Board the Canadian Pacific Steamship 'Empress of France' during her Round the World cruise 1923 by Walsham's Ltd.". Snapshot. 4.5"x2.75". Light soil, remnants of three corner mounts, fourth corner chipped off along the mount line. [43532] \$35

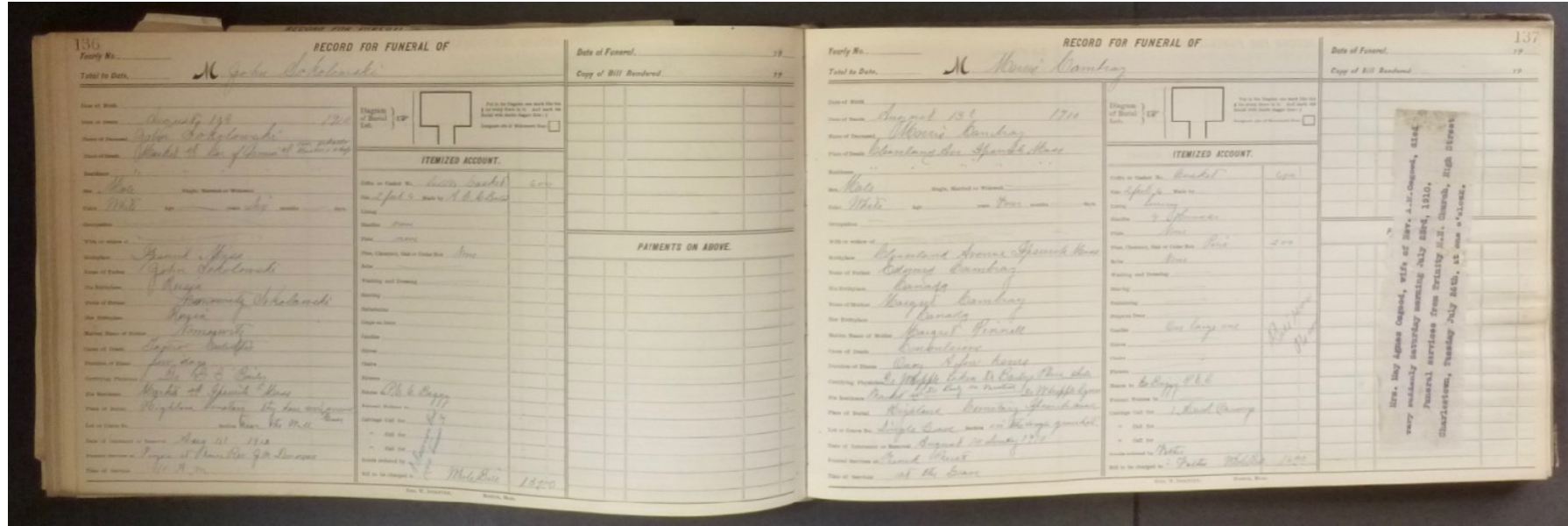


Printed on Board the  
Canadian Pacific Steamship  
'EMPRESS OF FRANCE,'  
during her  
Round the World Cruise 1923.  
by  
WALSHAM'S Ltd.,  
6, Hanover Square, London, W

13. [Fiery Death] 1876 LeMoyne Crematory Washington Pennsylvania Photographic Cabinet Card.

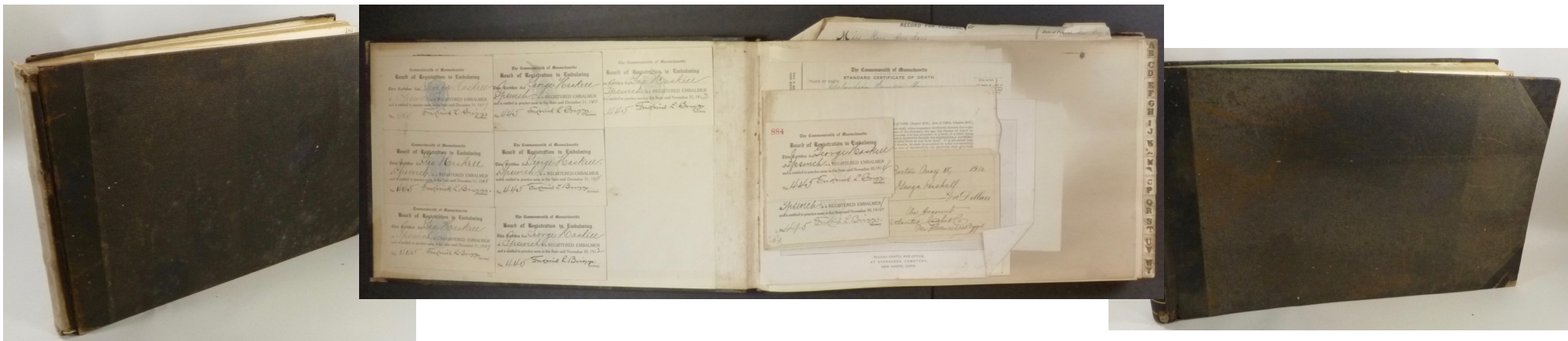
A handsome cabinet card issued by Francis LeMoyne for his crematorium, the first in the United States. LeMoyne, a physician who believed that buried bodies could corrupt the local water supplies, built his crematorium on his own land, upon a hill in Washington, Pennsylvania, a spot known locally as "Gallows Hill". The first cremation was performed on December 6, 1876 and LeMoyne himself was cremated there in 1879. The crematory was closed in 1901. This card illustrates the reception room and the crematory furnace and retort, with smaller view of the countryside and a portrait of Dr. LeMoyne. With the stamp of S.G. Rogers, Photographer, Washington, Pa." on the back. Cabinet card. 6.5"x4.25". Minor wear, some soil. [44632] \$450





#### 14. [Grave Undertakings] Ipswich Massachusetts 1903-1914 Undertaker's Funeral Record Book.

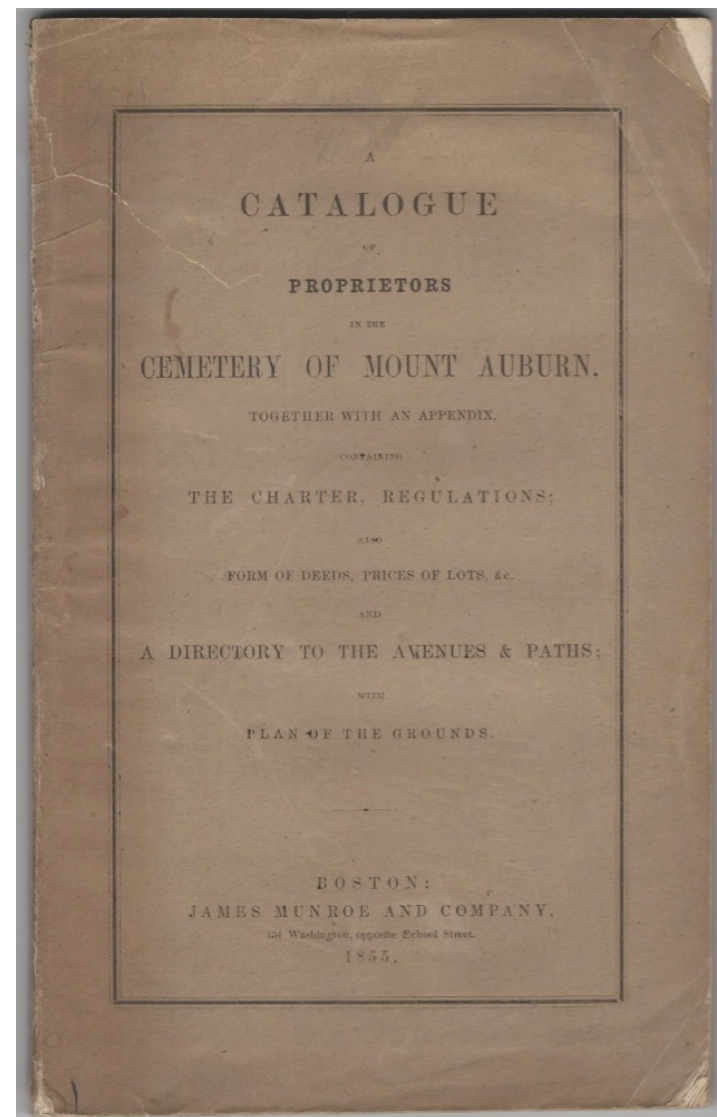
An undertaker's funeral record ledger kept by George Haskell of Ipswich, Massachusetts. Each page contains the personal details of the deceased and immediate family, the deceased's occupation, what the deceased died of and how long they had been suffering from it, place of funeral and burial, etc. In the first ledger entries are filled in through page 171, in the second ledger page 1/2 is lacking and there is a note on page 3, but the book is otherwise unused. With- 4 loose Embalmer's Certification cards for George Haskell, several death certificates and a few loose odds and ends. 2 hardcover volumes. 14"x8.5". 300 pages each. Covers quite soiled and worn, first volume spine cover lacking, pages with some scattered soil and wear. First volume with 7 Embalmer's Certification cards for George Haskell glued to the pastedown. First volume with leaves 59/60 and 61/62 cut out but present. Second (empty) ledger with leaf 1/2 lacking. [47977] \$150





15. [Monumental Death]  
Late 18th/Early 19th  
Century French Sketch  
for a Cross-Topped  
Monument.

An attractive small ink sketch on laid paper for a monument/memorial topped with a cross. There is microscopic, partially legible writing on the cornice in French. The back of the sheet has a column of numbers being added together, but there are no other notes. Single sheet. 4"x6.75". Folded, small edge chips, minor soil. [43234] \$40



16. [Mount Auburn] **A Catalogue of Proprietors in the Cemetery of Mount Auburn.**

Printed by James Munroe and Company of Boston and Cambridge, in 1855. "Together with an appendix, containing The Charter Regulations; also Form of Deeds, Prices of Lots, &c. and A Directory to the Avenues and Paths; with Plan of the Grounds. When it was opened in 1831, Mount Auburn was the first rural, or garden, cemetery in the United States. Softcover. 5.5"x9", 108 pages. Covers with light soil, some wear, corners creased, tear at the top. Pages with some scattered minor soil, light wear. LACKING the plan of the grounds, which appears to have once been tipped inside the front cover. [48204] \$100

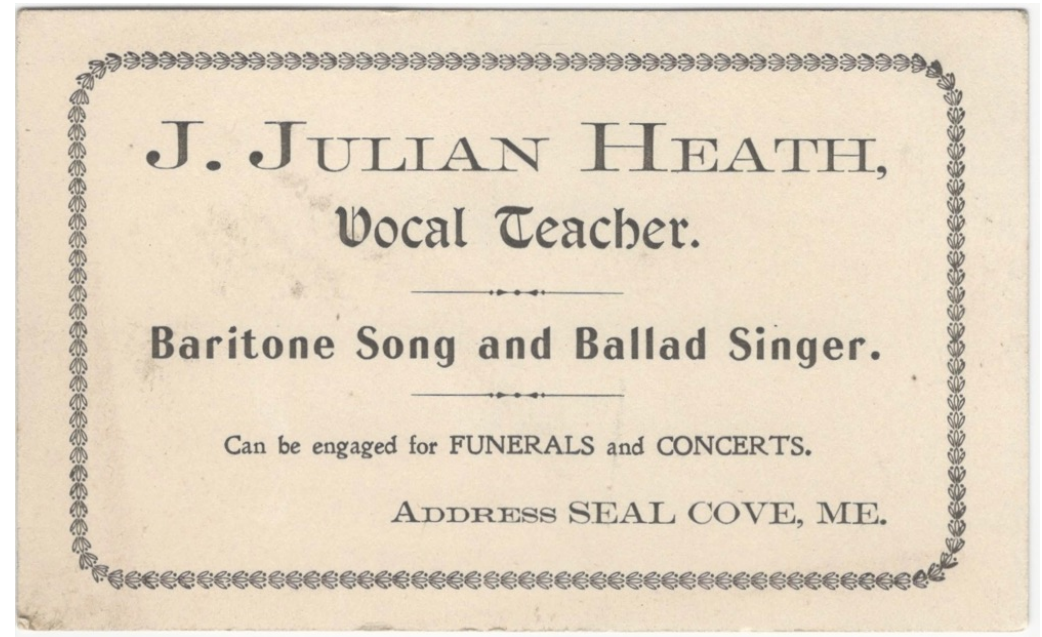


17. [Mourning Prints] **Jewish 19th Century Chromolithographed Mourning Print.**

A striking Jewish mourning print, c.1887. There is a space for information to be filled in for both a husband and wife, but only the husband portion is completed, for Yosef David, son (of) Manis. Print. 19.25"x15.5". Some closed tears, small edge chips, creases and wear. [42705] \$350

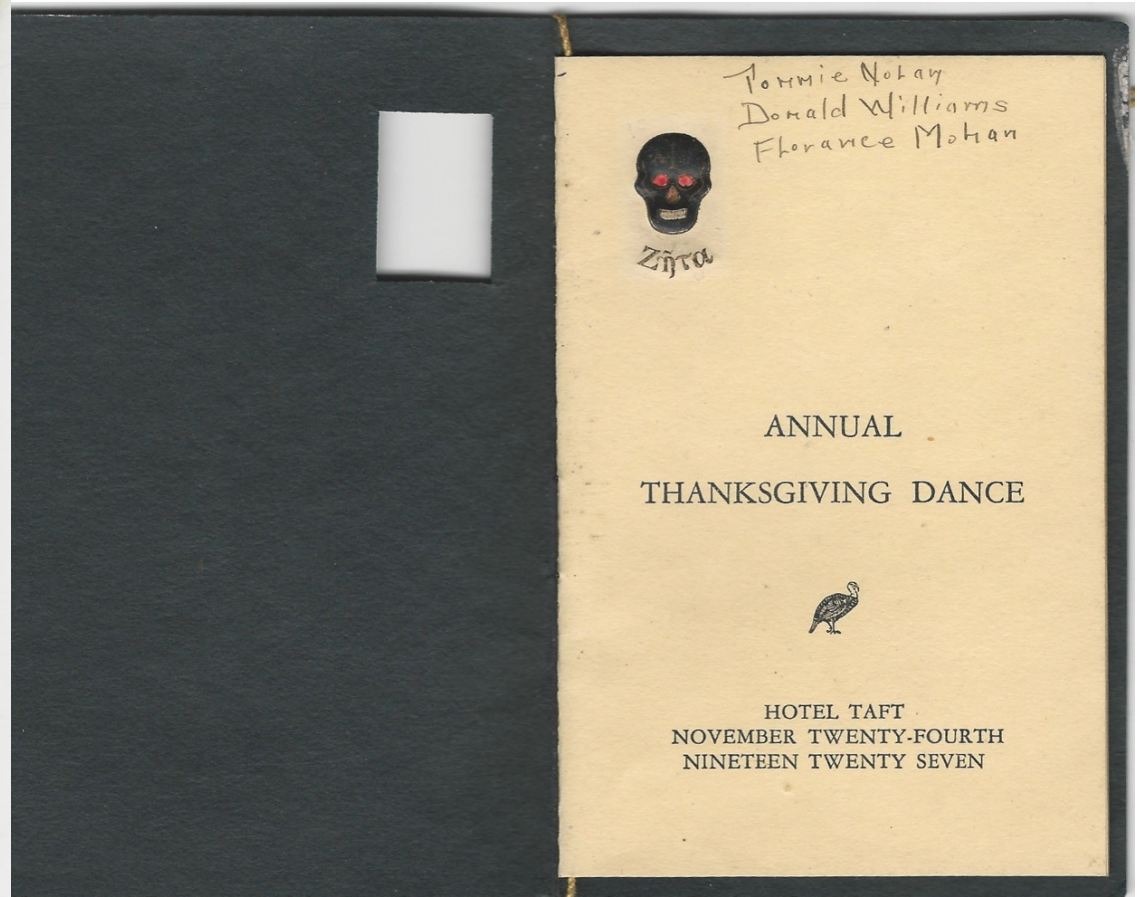
18. [Singing Death] C.1900 Seal Cove Maine Vocal Teacher, Funeral & Concert Singer Business Card.

An interesting business card for J. Julian Heath of Seal Cove, Maine, "Vocal Teacher - Baritone Song and Ballad Singer - Can be engaged for funerals and concerts". Card. 4.75"x2.75+ ". Minor wear, light soil. [43938] \$25



19. [Symbolic Death] Thanksgiving 1927 Fraternity Dance Card With Glowing Eyed Skull.

A most distinctive dance card, featuring a skull with glowing red eyes. Apparently for the Zeta Eta Tau Alpha fraternity, of which we can find no record. Card booklet. 3"x5", gold cord. Removed from a scrapbook with four glue residue spots on the back cover. [47613] \$20





20. [Watery Death] 1878 Mourning Card for the 700 Passengers of the 'Princess Alice'.

A dramatic mourning card in white and black showing willows, an angel and a wrecked sailing ship. "In Memory of Nearly Seven Hundred Passengers Who perished by the sinking of the Saloon Steamer, 'Princess Alice,' in the Thames, off Woolwich, September 3rd, 1878". The 'Princess Alice' was an excursion steamer which was returning up the Thames after an early evening run; she was within site of her home pier when she was struck by another ship traveling down the Thames. Cut almost in half, the 'Princess Alice' sank in less than 4 minutes and many of the victims' bodies were found trapped in her stairwells and saloons. Of the more than 800 people on board, only about a hundred survived. Card. 4.5"x3". Minor soil. [44295] \$250



*That's All, Folks!*