



Catalog 413:

“Going Places - Album #2”

## JOSLIN HALL RARE BOOKS, EPHEMERA, & PHOTOGRAPHS

Post Office Box 49  
Hatfield, Mass 01038

telephone: (413) 247-5080  
e-mail: [office@joslinhall.com](mailto:office@joslinhall.com)  
website: [www.joslinhall.com](http://www.joslinhall.com)

Member- Antiquarian Booksellers Association of America;  
International League of Antiquarian Booksellers;  
Southern New England Antiquarian Booksellers;  
Ephemera Society of America

Email reservations are highly recommended.

Standard courtesies are extended to institutions and dealers. Postage charges are additional.

All items may be returned within ten days of receipt.

Checks, Visa, Mastercard & Paypal accepted.

Join us on Facebook & Twitter !

Welcome to our second album of transportation-related vernacular photography, or, as the Book Elves put it, "car snapshots".

There are 38 photos, offered as a group for \$125 net. Dimensions are noted in inches in the lower right corner.

Enjoy!





















Try this St. Petersburg, Florida 1921











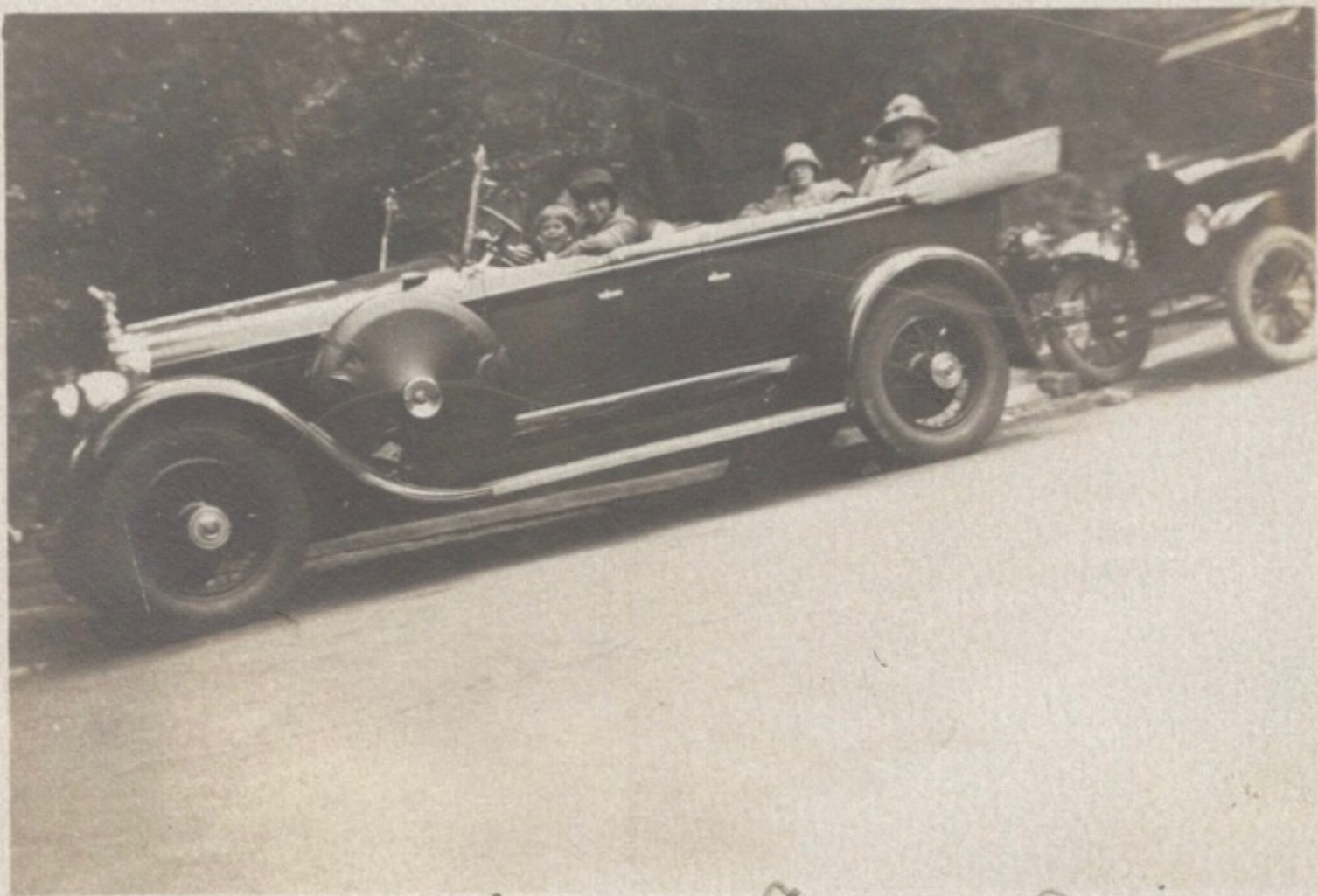












Gertie, Jackie, Joyce, Eleanor + Effie

































• JUN • 67













***That's All, Folks!***

